

# Automatic Video Skew and EQ Adjustment EXTENDER



VGA-LDXW PRO(Local)



VGA-RDXW PRO(Remote)

## VGA-EDXW PRO

### USER MANUAL V1.0

#### Package Contents

- VGA-LDXW PRO Local Unit x 1
- VGA-RDXW PRO Remote Unit x 1
- User manual x 1
- Power adapter DC 12V with lock x 2
- VGA Cable 1.2m x 1

If any thing missed, please contact with your vendor.

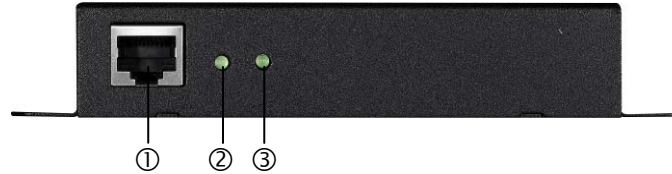
#### Features

- Through the VGA auto video adjustment extender, you can use one PC to display identical image and extension of VGA signal up to 300 meter.
- Resolution up to 1600 x 1200.
- Equalization & Gain is adjusted automatically.
- VGA's RGB skew is adjusted automatically.
- EDID copy(from Remote to Local)
- One CAT.5 cable extension.

#### Specifications

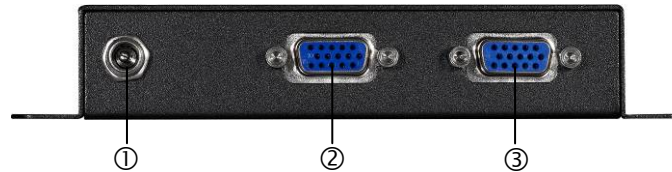
Function	VGA-LDXW PRO	VGA-RDXW PRO
PC Connector	1 x HD-15 Female	None
Monitor Connector	1 x HD-15 Female	1 x HD-15 Female
RJ-45 Connector		1
Power LED		1
Link LED		1
Video Resolution	1600 x 1200 @ 60Hz	
Cable Distance	300 m (Max.)	
Power Adapter	DC 12V with lock	
Housing	Metal	
Weight	288 g	288 g
Dimensions(LxWxH)	150x80x25 mm	

#### VGA-LDXW PRO FRONT VIEW



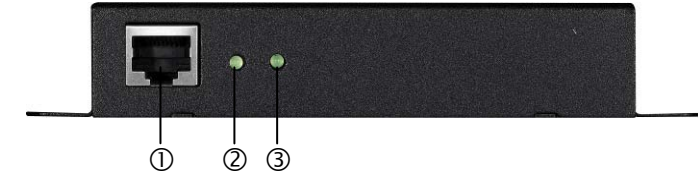
No	Component	Description
1	CAT.5 Connector	Plugs the CAT5 cable into this connector.
2	Link LED	<b>On</b> when links successfully. <b>Off</b> when no link to Remote unit. <b>Flash</b> when update EDID from Remote to Local.
3	Power LED	On when the unit power on.

#### VGA-LDXW PRO REAR VIEW



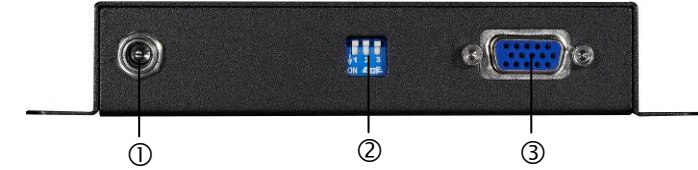
No	Component	Description
1	Power Jack	The power adaptor plugs here.
2	VGA-out Connector	The VGA cable connects to the Local monitor plugs in here.
3	VGA-In Connector	The VGA cable connects to the PC plugs in here.

#### VGA-RDXW PRO FRONT VIEW



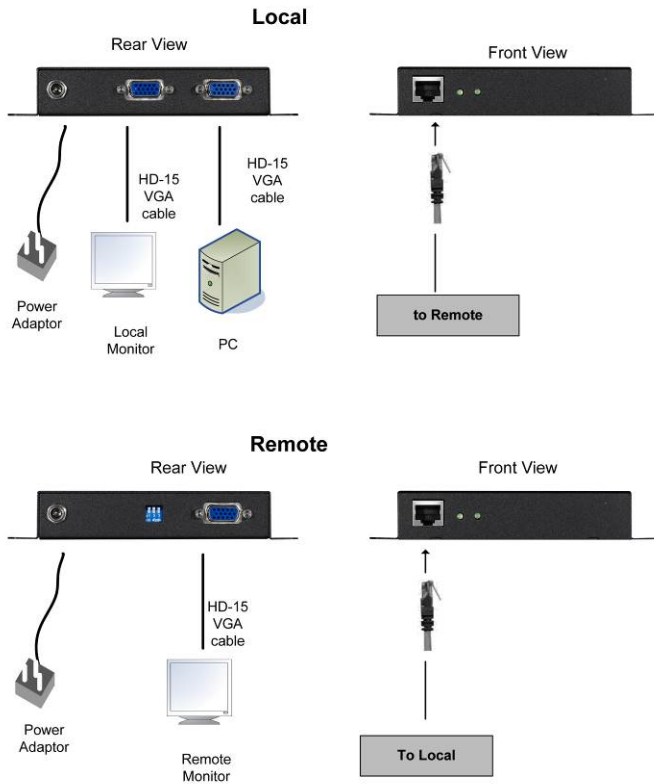
No	Component	Description
1	CAT.5 Connector	Plugs the CAT5 cable into this connector.
2	Link LED	<b>On</b> when links successfully. <b>Off</b> when no link to Remote unit. <b>Flash</b> when update EDID from Remote to Local.
3	Power LED	On when the unit power on.

#### VGA-RDXW PRO REAR VIEW



No	Component	Description
1	Power Jack	The power adaptor plugs here.
2	DIP switch	DIP switch for sharpness control
3	VGA-In Connector	The VGA cable connects to the PC plugs in here.

# Installation



1. Connect PC VGA port by using standard VGA cable to Local.
2. Connect CAT5 cable to Local.
3. Connect CAT5 cable to Remote.
4. Connect Monitor by using standard VGA cable to Remote.
5. Power on and VGA-LDXW PRO and VGA-RDXW PRO.
6. Power on Local PC.

# Operation

## “Auto video adjustment” operation

When the user reconnects the CAT5/E cable between the local and remote unit, the VGA-EDXW PRO will start to adjust the remote video automatically in seconds.

For better video adjust result, the resolution of video source (usually: PC) should under or equal the resolution “1280\*1024@60”.

For example, when the user works with the VGA resolution 1600\*1200@60, change the video resolution to be 1280\*1024@60 before install the VGA-EDXW PRO; then install the VGA-EDXW PRO.

And after the VGA-EDXW PRO finished the “auto video adjustment procedure”, change the video resolution back to 1600\*1200@60 and process “lock video setting”.

## “Auto EDID copy” operation

When the user reconnects the CAT5/E cable between the local and remote unit, the VGA-EDXW PRO will start to copy EDID from remote Monitor to local unit.

And local unit will save the EDID content from the remote monitor even when the VGA-EDXW PRO re-power.

The VGA-EDXW PRO will update the EDID content, when the remote monitor’s EDID is different with the EDID in the memory of the VGA-EDXW PRO.

\*note: When there is no connection between the local and remote unit, the local unit will use the EDID content of the local monitor to the PC.

## DIP Switch of VGA-RDXW PRO

For advanced usage, the user can follow the below table to adjust the video after “auto video adjustment procedure”.

Switch Position			Softness (-)
SW1	SW2	SW3	
OFF	ON	ON	               -0-                 (+)
OFF	ON	OFF	
OFF	OFF	ON	
OFF	OFF	OFF	
ON	OFF	OFF	
ON	OFF	ON	
ON	ON	ON	
ON	ON	OFF	
ON	ON	ON	Sharpness Lock Video Setting

## Lock Video Setting (Remote)

We suggest the user “Lock Video Setting” by tapping the SW1, SW2, and SW3 to be “ON”, after the extender finish the “auto video adjustment procedure”.

So even when the VGA-EDXW PRO re-power or the CAT5 connection fail temporarily, the video setting parameter of VGA-EDXW PRO won’t change or restart the “auto video adjustment procedure”.

## Troubleshooting

1. If no video signal is displayed on the monitor.
  - (1) Please check all of VGA cable and CAT5 cable is loosened or disconnected.
  - (2) Power adaptor is not connected.
2. If video signal is foggy or un-clear, please check VGA connector, or low the VGA resolution for long cable. It is highly recommended to use “optimal CAT5 cable length” to get the best video quality and not to waste unnecessary CAT5 cable.

© C&C TECHNIC TAIWAN CO., LTD. All rights reserved.

## Trademarks:

All the companies, brand names, and product names referred to this manual are the trademarks or registered trademarks belonging to their respective companies.